

Feman

Jagodina - Srbija

tel: +381 35 230 000

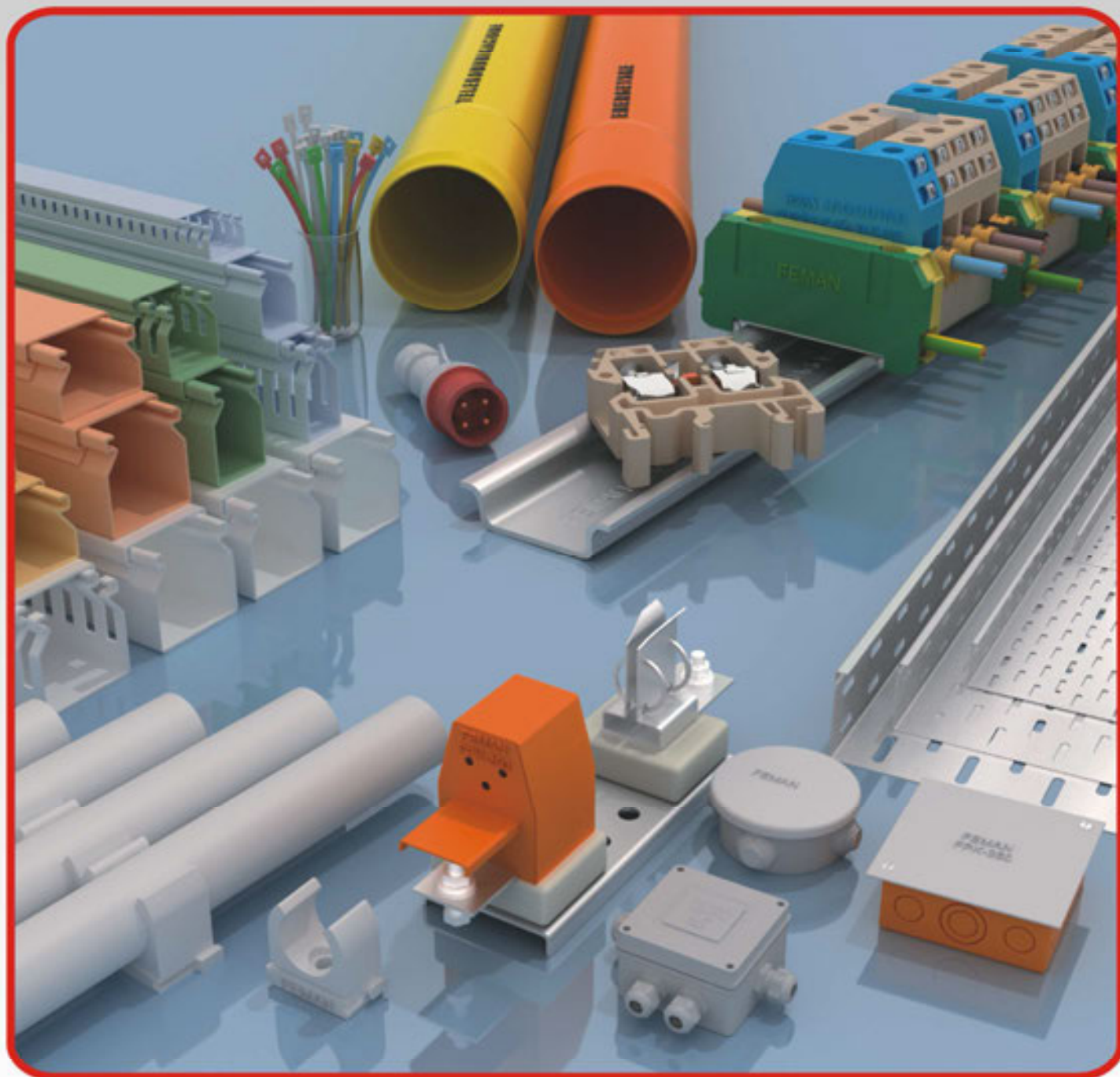
fax: +381 35 230 024

www.feman.net

6

INSTALLATION AND
CONNECTION ACCESSORIES

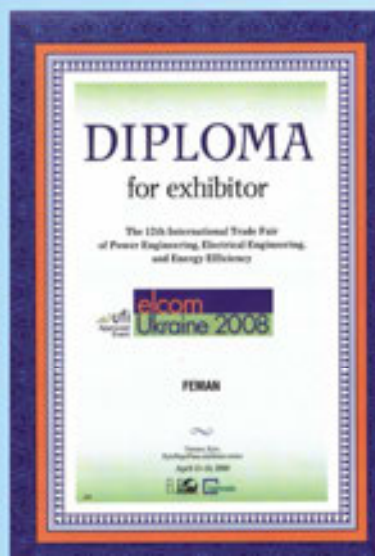
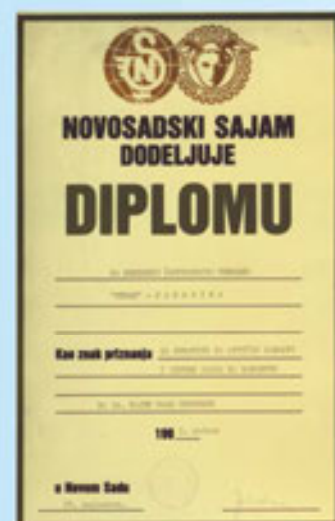
Quality above all



ON CUSTOMER'S REQUEST WE WILL DELIVER THE GENERAL CATALOGUE

Producer keeps all rights to additions and changes regarding full content in the catalog

more
than 1500
quality products



A long lasting tradition - factory established 1985

www.feman.net



DIRECTORY

of other FEMAN products



*Quality
above all*



The creator of this business idea,
Miodrag Nikolic, is the owner and
founder of the company FEMAN,
and is an electrical engineer
by specialty

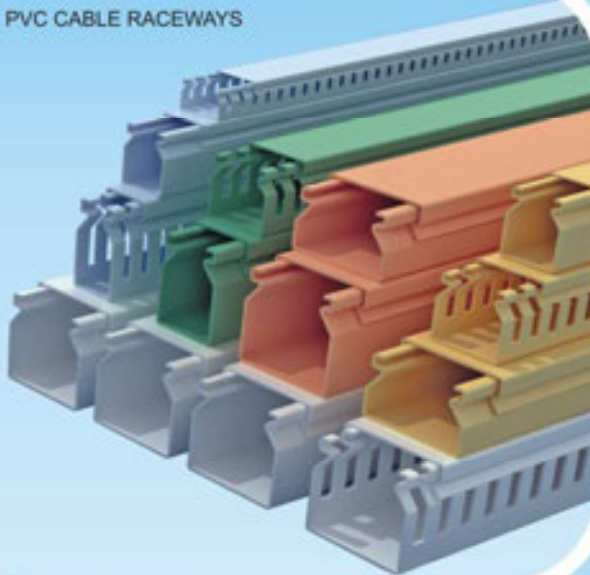
Fuse Switch Disconnecter – Vertical



EUROKRISTAL



PVC CABLE RACEWAYS



VS CLAMP



Combined Hydraulic Pump



Manual Mechanical Crimpers Fp-50 And Fp-120



Automatic Crimpers



SILICONE INSULATORS WITH CHAINS FOR 10, 25 AND 35 KV



Manual Scissors For Cutting Iron And Cable



Manual Hydraulic Crimper Fp-300



Manual Hydraulic Crimper Fp-185



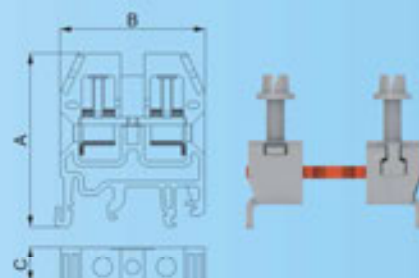
Manual Hydraulic Crimper Fp-300



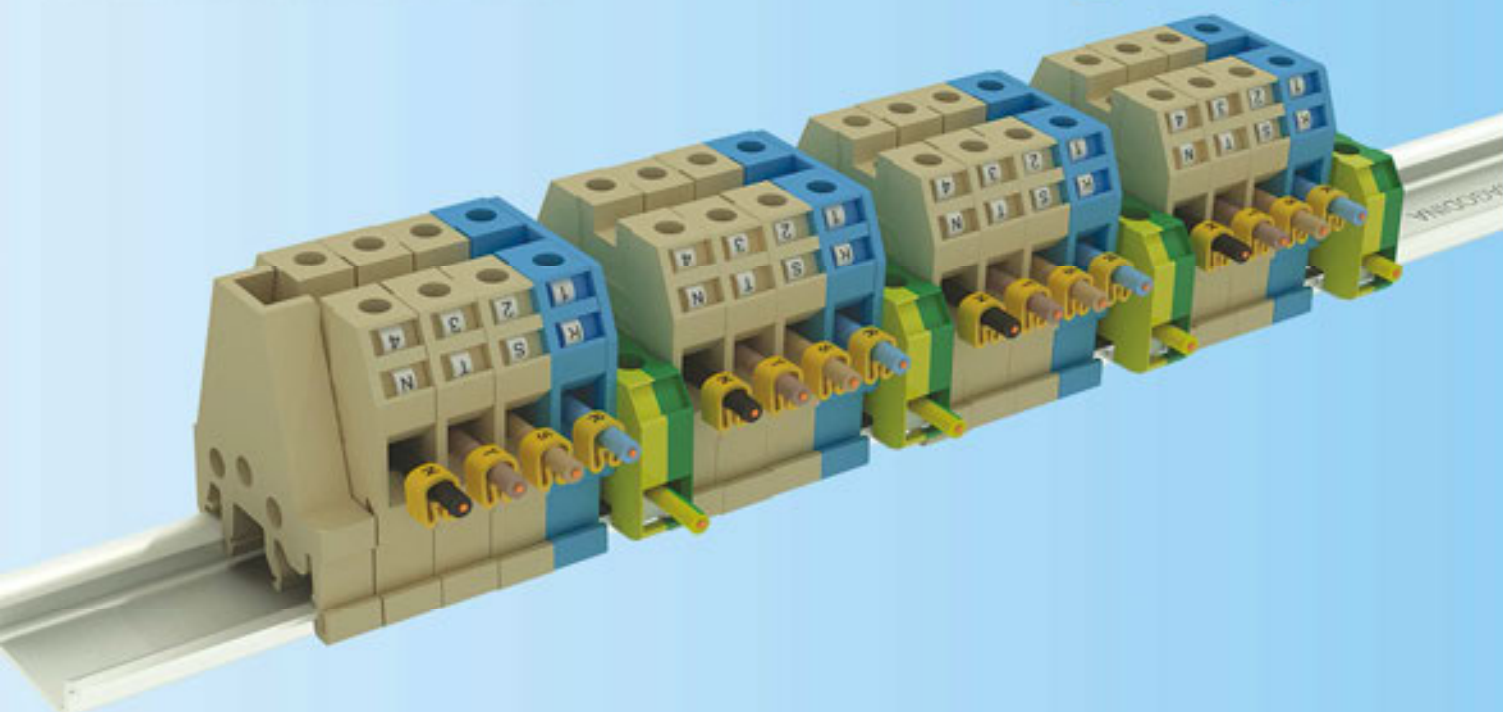
BATTERY OPERATED CRIMPING TOOL



Code number	Designation mm2	Dimensions AxBxC	Package pcs	Weight kg/100 pcs
5000004	FKN 2,5-4	48x40x7	120	1,31
5000006	FKN 6	48x40x9	100	1,80
5000010	FKN 10	48x40x10	100	2,20
5000016	FKN 16	53x50x12	50	2,93
5000035	FKN 25-35	53x50x15	50	4,75



Currently, the housing of FEMAN's terminal blocks is made exclusively from the highest quality imported plastic materials, self-extinguishing V-0, and has an insulation value of 750 V, as well as heat resistance to 1100°C without deforming. The block bases are constructed to fit all types of existing rails. FEMAN VS-clamps are completely made according to VDE - DIN standards for this type of product. Along with additional sizes of clamps (2,5 - 35 mm²), FEMAN makes all the accompanying gear/elements. In recent years, FEMAN has proven the quality of their terminal blocks, and the best evidence of this is the several million elements of all different sizes delivered and installed.

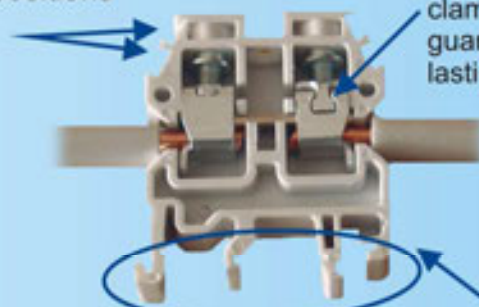


Very quick and easy installation on all kinds of rails.

The housing of the clamp is made of high quality, resistant to high temperatures, self-extinguishing BAYER polyamides with high toughness properties – The opening for the screw and the holders of the clamp do not break.

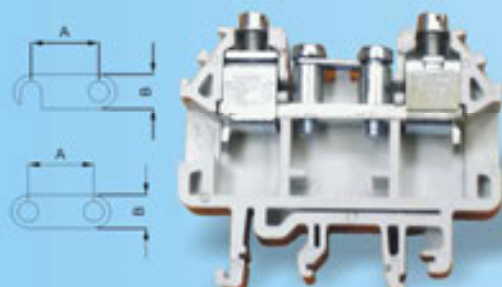
High-end technical solution, specialized T junction, locking of contact part, prevents the opening of the clamping part, which guarantees long lasting connection.

Marking positions



Base of the clamp is universal and can be installed on every type of rails.

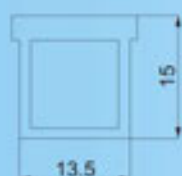




Code number	Designation mm ²	Dimensions AxBxC	Package pcs	Weight kg/100 pcs
5000066	FKN 16 P	53x50	50	3,20
5000281	Premosnica 2- polna 16-P pokretna	-	50	0,60
5000282	Premosnica 2- polna 16-P nepokretna	-	50	0,63
5000284	Rolnica za premoščavanje sa vijkom 16-P	-	50	0,90

Note: When connecting wire products to VS-clamps, always use insulated connectors or pin-type terminals, or solder the ends.

PARTITION PLATE FOR TERMINAL BLOCKS



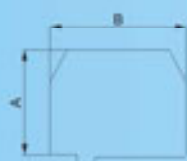
Used for separating commoning link when making a series of VS clamps.

Plate thickness is 0.5 mm.

Package: 100 pcs

Weight: 0,01 kg/100pcs

END CAP FOR TERMINAL BLOCKS



Code number	For VS clamp	AxB mm	Package pcs	Weight kg/100 pcs
5000104	FKN 4-10	37x40	500	0,30
5000116	FKN 16-35	42x50	500	0,42
5000117	FKN 16 P	36x58	500	0,29

Used to end a series of clamps by closing the open part of the clamp.

Also used for separating groups of clamps.

LIMIT PLATE FOR TERMINAL BLOCKS



These plates are attached to the rail at the end of a block series. Thanks to the specially designed base, the plate fits all standard rails. The plate is made of high-quality polyamide.

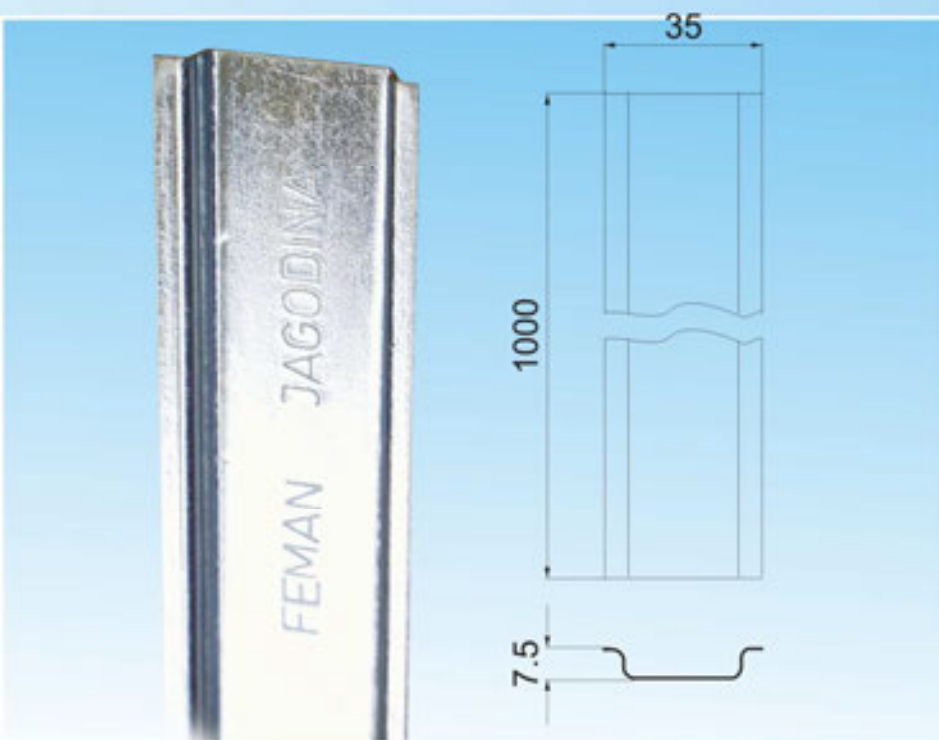
Package: 100 pcs

Weight: 0, 96 kg/100pcs

Code number: 5000120

Used to support terminal blocks joined in a series. The advantage of this rail is that it is calibrated so that the teeth of the elements firmly attach to the rail. Thanks to its narrow tolerance, the rail will not crack.

Package: 10 pcs
Weight: 31 kg/100pcs
Code number: 5000200



TERMINAL BLOCKS



Code number	Type	Dimensions AxBxC	Package m	Weight kg/100 pcs
5000182	FRS 4-16/2	30x72x22	50	7
5000183	FRS 4-16/3	30x72x33	50	10,5

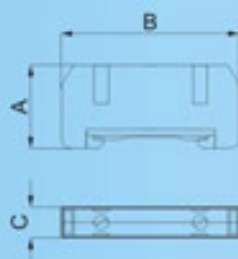
Used for connection of measuring and switching boxes. Housing is made of high quality, imported plastic masses, with self-extinguishing properties V-0. Contacts are made of brass profiles which establish connection between copper and aluminium at the same time Base of the clamp is universal and can be installed on every type of rails.



Code number	No. of poles	For VS clamp	A mm	B mm	Package pcs	Weight kg/100 pcs
5000204	2	FKN 2.5-4	7,8	6x1	10	0,70
5000206	2	FKN 6	8,9	6x1	10	0,76
5000210	2	FKN 10	10,2	6x1	10	0,82
5000216	2	FKN 16	12,2	6x2	10	0,88
5000235	2	FKN 25-35	21,1	6x2	10	0,94
5000236	3	FKN 2.5-4	7,8	6x1	10	1,05
5000237	3	FKN 6	8,9	6x1	10	1,14
5000238	3	FKN 10	10,2	6x1	10	1,23
5000240	3	FKN 16	12,2	6x2	10	1,32
5000242	3	FKN 25-35	21,1	6x2	10	1,41
5000244	4	FKN 2.5-4	7,8	6x1	10	1,40
5000246	4	FKN 6	8,9	6x1	10	1,52
5000247	4	FKN 10	10,2	6x1	10	1,64
5000248	4	FKN 16	12,2	6x2	10	1,76
5000249	4	FKN 25-35	21,1	6x2	10	1,88
5000250	5	FKN 2.5-4	7,8	6x1	10	1,75
5000251	5	FKN 6	8,9	6x1	10	1,90
5000252	5	FKN 10	10,2	6x1	10	2,05
5000253	5	FKN 16	12,2	6x2	10	2,20
5000254	5	FKN 25-35	21,1	6x2	10	2,35
5000255	10	FKN 2.5-4	7,8	6x1	10	3,50
5000260	10	FKN 6	8,9	6x1	10	3,80
5000270	10	FKN 10	10,2	6x1	10	4,10
5000275	10	FKN 16	12,2	6x2	10	4,40
5000278	10	FKN 25-35	21,1	6x2	10	4,70
5000281	2 mov.	FKN 16 P	12,2	6x1	10	0,60
5000282	nonmov.	FKN 16 P	12,2	6x1	10	0,63

Upon request we make and deliver commoning links with the desired number of poles.

TERMINAL BLOCK FOR GROUNDING



Code number	Designation mm2	Dimensions AxBxC	Package pcs	Weight kg/100 pcs
5000072	FKU 2.5	24x55x7,5	100	1,0
5000076	FKU 6	24x55x8,5	100	1,3
5000078	FKU 16	28,5x55x11,5	50	2,4

Construction is designed so that metal teeth (connection with rail) are at the same time used as a connection of the block and the grounding.

Code number		Designation	Package pcs	Weight kg/10 pcs
0.75-4	4-10			
1721001	1741001	1	50	0,15
1721002	1741002	2	50	0,15
1721003	1741003	3	50	0,15
1721004	1741004	4	50	0,15
1721005	1741005	5	50	0,15
1721006	1741006	6	50	0,15
1721007	1741007	7	50	0,15
1721008	1741008	8	50	0,15
1721009	1741009	9	50	0,15
1721010	1741010	0	50	0,15
1721011	1741011	A	50	0,15
1721012	1741012	B	50	0,15
1721013	1741013	C	50	0,15
1721014	1741014	D	50	0,15
1721015	1741015	E	50	0,15
1721016	1741016	F	50	0,15
1721017	1741017	G	50	0,15
1721018	1741018	H	50	0,15
1721019	1741019	I	50	0,15
1721020	1741020	J	50	0,15
1721021	1741021	K	50	0,15
1721022	1741022	L	50	0,15
1721023	1741023	M	50	0,15
1721024	1741024	N	50	0,15
1721025	1741025	O	50	0,15
1721026	1741026	P	50	0,15
1721027	1741027	Q	50	0,15
1721028	1741028	R	50	0,15
1721029	1741029	S	50	0,15
1721030	1741030	T	50	0,15
1721031	1741031	U	50	0,15
1721032	1741032	V	50	0,15
1721033	1741033	W	50	0,15
1721034	1741034	X	50	0,15
1721035	1741035	Y	50	0,15
1721036	1741036	Z	50	0,15
1721037	1741037	+	50	0,15
1721038	1741038	-	50	0,15

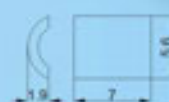


Made of soft plastic, in yellow (orange) with imprinted, non-fading black lettering. They are round with teeth which prevent them from moving. Numbers run from 0-99, for cables 0, 75-6 mm² in diameter (at the customers request, we can make them for larger diameters). Delivered in spool cases which can be connected to each other, also in small plastic bags according to the needs and use. When ordering, indicate quantities and designation of cable.

TERMINAL BLOCK LABELS

Made of soft plastic, in white color, with imprinted non-fading black lettering. Labels are flat and the numbers run from 0-99. Delivered in spool cases which can be connected to each other. When ordering, be sure to indicate which labels you are ordering and in what quantities.

Package: 100x10
Weight: 0,14 kg/10 pcs
Code number: 5000190



Code number white	Code number grey	A x B mm	Length mm	Package pcs	Weight kg/pc
5003017	5003018	17 x 17	2000	50	0,28
5003010	5003011	30 x 10	2000	50	0,42
5003020	5003021	30 x 20	2000	50	0,47
5003040	5003041	30 x 40	2000	25	0,63
5003060	5003061	30 x 60	2000	20	0,82
5004040	5004041	40 x 40	2000	20	0,74
5004060	5004061	40 x 60	2000	20	1,03
5006040	5006041	60 x 40	2000	20	0,94
5006060	5006061	60 x 60	2000	15	1,22
5006120	5006121	60 x 120	2000	10	2,06

Used for contemporaneously cable laying of all kinds of electrical, phone, signal cables and other wire installations on the wall. They facilitate easy installation, swift replacement in case of damages and malfunction and supplementary cable laying. Closed PVC cable raceways give a good mechanical protection of electrical lines. They can enable good visibility and give a good esthetic look. They are very stable and very resistant to chemicals. They can be installed on every surface, horizontally and vertically.

Branching of the raceways is done by cutting the sides towards the dimension of separative raceway, and during angled turning, the endings of the raceways are adjusted by cutting, to needed angles. The shutter panel is attached from the upper side, without the use of any tools. The endings of raceways can be closed with the same shutter panel. At the end of the shutter panel, cut of the sides appropriate to the length of the height of the raceway and then heat the specific point of bending and make the shaping adjustments.

Raceway 30x10 is intended for installations of phone, electrical and computer wiring in offices, laboratories, workshops etc. It has a longitudinal

compartment and with its design can fit into every interior design.

Construction of the raceways assures very neat handling of phone and computer lines with energy lines.

Raceways are made of very hard, self-extinguishing PVC, temperature resistant to 70 C°.



CLOSED ON-WALL PVC RACEWAY

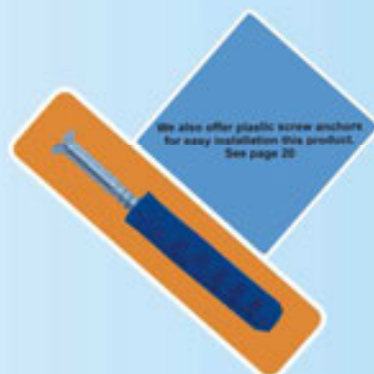
Code number	For cable mm 2	Length mm	Package pcs	Weight kg/pc
5000315	3 x 1,5	2000	50	13,6
5000325	3 x 2,5	2000	50	17
5000525	5 x 2,5	2000	50	20,6

Code number white	Code number grey	A x B mm	Length mm	Package pc	Weight kg/pc
5063040	5063041	30 x 40	2000	25	0,60
5063060	5063061	30 x 60	2000	20	0,70
5064040	5064041	40 x 40	2000	20	0,65
5064060	5064061	40 x 60	2000	20	0,90
5066040	5066041	60 x 40	2000	20	0,88
5066060	5066061	60 x 60	2000	16	1,14
5066120	5066121	60 x 120	2000	10	1,92

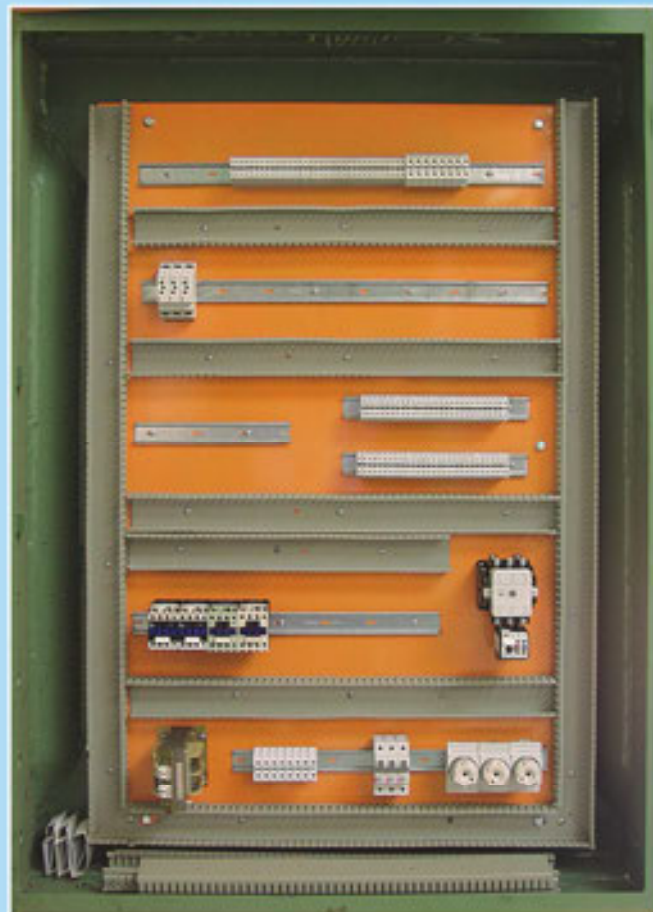
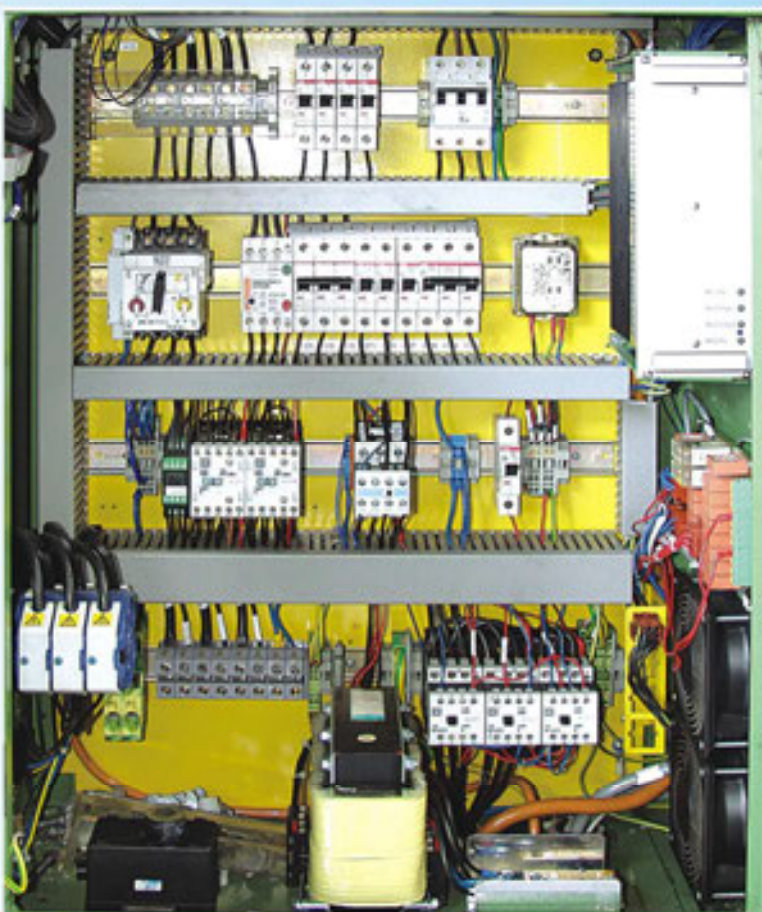


Slotted PVC cable raceways are very convenient for cable laying of on-wall installations in offices, laboratories, workshops etc. They facilitate easy installation procedure, swift replacement in case of damages and malfunction and supplementary cable laying. They can secure good mechanical protection for electrical lines. They assure good visibility and give a good esthetic look. They can be installed on every surface, horizontally and vertically. They are very stable and very resistant to chemicals. The sides have cut-outs which can be useful for branching of electrical lines and attaching them to various elements.

The sizes of openings are regulated by removing one or more ridges on the sides of the raceways. Raceways are made of very hard, self-extinguishing PVC, with temperature resistance to 70 C°. We standardly produce them in white and grey colors, but customers demand we can produce them in any other color.



We also offer plastic screw anchors for easy installation this product. See page 20.

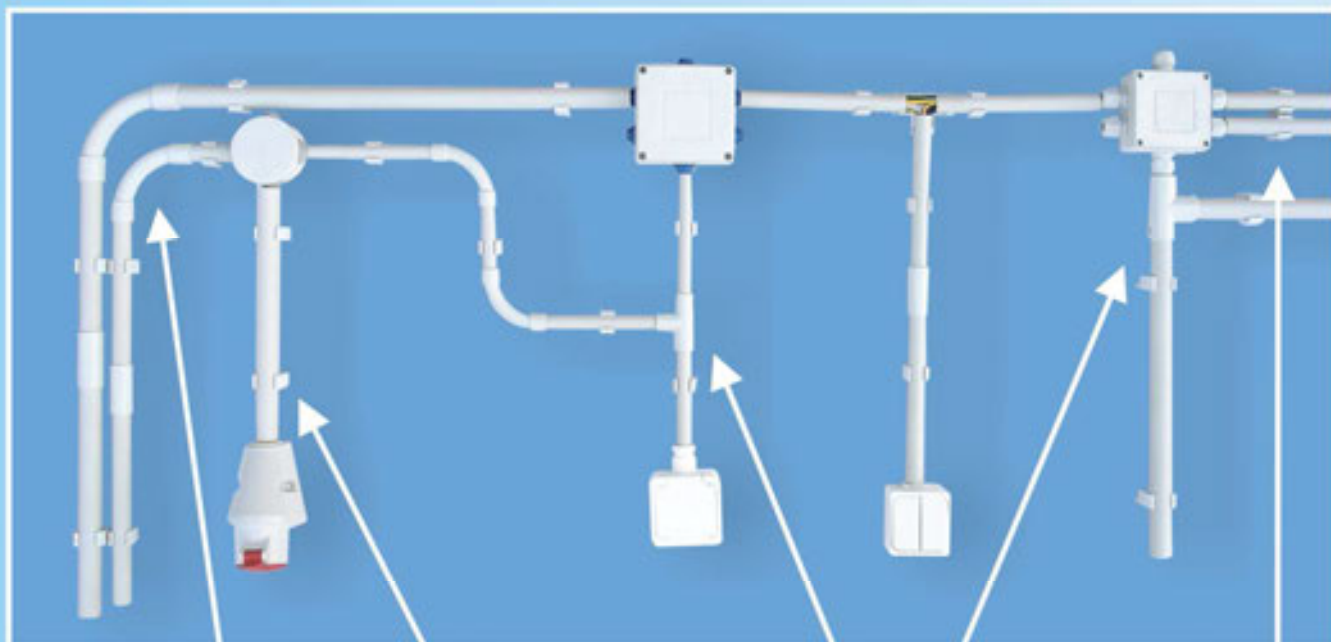




Code number	Type	ø inter./ ø exter. mm	Length m	Package pc	Weight kg/100pcs
5300109	Pg 9	12,6/15,2	3	25	25,0
5300110	Pg 11	16/18,6	3	25	36,0
5300130	Pg 13,5	17,5/20,4	3	25	39,8
5300160	Pg 16	19,4/22,5	3	20	47,6
5300210	Pg 21	24,9/28,3	3	20	65,0
5300290	Pg 29	33,6/37	3	20	87,0
5300360	Pg 36	42,8/47	3	20	135,0

Code number	Type	ø inter./ ø exter. mm	Length m	Package pc	Weight kg/100pcs
5300016	M - 16	13,3-16	3	25	27,6
5300020	M - 20	17,1/20	3	25	37,5
5300025	M - 25	22,1/25	3	20	47,6
5300032	M - 32	29/32	3	20	63,8
5300040	M - 40	36,5/40	3	20	93,3

FIN conduit is made of hard, self-extinguishable, smooth PVC in gray AL 7035 tone . Used in stead of spaced support rings for contemporary installation of all types of electrical, TT, signalization and other on-wall installations. Installations with FIN conduit are tidy, elegant and economical, easy and time saving. It is well suited for moist areas. Bending to the desired angle is performed with a special spring which is inserted into the desired location, and then removed after the bending is finished. FEMAN also produces a special tool for widening the bending location.



Direction change of conduits



Easy and simple attachment of conduits with FEPO hangers



Easy and simple connection of multiple conduits



Connecting multiple FEPO hangers enables larger number of conduits

Code number	For FIN conduit	Opening diameter mm	Package pcs	Weight kg/100pcs
5340011	Pg 11	18,6	100	0,60
5340013	Pg 13,5	20,4	100	0,70
5340016	Pg 16	22,5	100	0,80
5340021	Pg 21	28,3	100	1,00
5340029	Pg 29	37	50	1,3
5340036	Pg 36	47	25	1,5
5340042	Pg 42	54	25	1,7
5340048	Pg 48	59,5	25	2

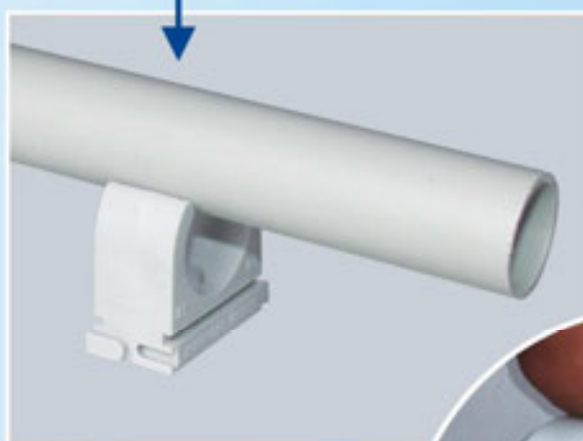
Code number	For FIN conduit	Opening diameter mm	Package pcs	Weight kg/100pcs
5340316	M - 16	16	100	0,5
5340320	M - 20	20	100	0,7
5340325	M - 25	25	100	0,9
5340332	M - 32	32	50	1,2
5340340	M - 40	40	50	1,4



FEPO hangers are used for on-wall electrical installations using FIN conduit. They are made of a special thermoplastic material and can be attached to each other in series.



Simple lying of the conduits by means of pressure

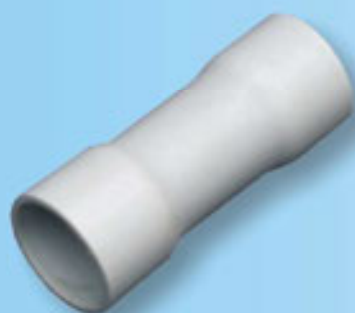


We can offer plastic screw anchors for installation of this product.



ADAPTERS FOR FIN CONDUIT

FimaN



Code number	For FIN conduit	ø inside/ ø outside mm	Package pcs	Weight kg/100pcs
5310109	Pg 9	15,2/17,6	50	6,8
5310110	Pg 11	18,6/21	50	7,5
5310130	Pg 13,5	20,4/23,1	50	8,0
5310160	Pg 16	22,5/25,4	50	9,6
5310210	Pg 21	28,3/31,5	50	13,5
5310290	Pg 29	37/40,2	25	29,0
5310360	Pg 36	47/51,1	25	30,0

Code number	For FIN conduit	ø inside/ ø outside mm	Package pcs	Weight kg/100pcs
5340516	M - 16	16/18,7	50	0,6
5340520	M - 20	20/22,9	50	0,8
5340525	M - 25	25/27,9	50	1,2
5340532	M - 32	32/35	50	1,4
5340540	M - 40	40/43,5	50	1,6

These adapters are used for extending FIN on-wall installation conduit. They are made of hard, smooth-finished, gray (RAL 7035) PVC. Extension and installation of FIN conduits with FIN adapters is fast, easy, reliable and simple.

ELBOWS FOR FIN CONDUIT

FimaN



Code number	For FIN conduit	ø inside/ ø outside mm	Package pcs	Weight kg/100pcs
5315009	Pg 9	15,2/17,6	50	1,1
5315110	Pg 11	18,6/21	50	1,4
5315130	Pg 13,5	20,4/23,1	50	3,0
5315160	Pg 16	22,5/25,4	50	4,0
5315210	Pg 21	28,3/31,5	50	7,5
5315290	Pg 29	37/40,2	25	12,2
5315360	Pg 36	47/51,1	25	21,0

Code number	For FIN conduit	ø inside/ ø outside mm	Package pcs	Weight kg/100pcs
5340416	M - 16	16/18,7	50	1,2
5340420	M - 20	20/22,9	50	1,8
5340425	M - 25	25/27,9	50	2,8
5340432	M - 32	32/35	25	3,2
5340440	M - 40	40/43,5	25	3,9

These elbows are used to change the direction of the conduits. They are made of hard, smooth-finished, gray (RAL 7035) PVC. Extension and installation of FIN conduits with FIN elbows is fast, easy, reliable and simple.

METAL HANGERS

FimaN



Code number	For FIN conduit	ø inside/ ø outside mm	Package pcs	Weight kg/100pcs
5340109	Pg 9	15,2	100	0,7
5340111	Pg 11	18,6	100	0,8
5340113	Pg 13,5	20,9	100	0,9
5340116	Pg 16	22,5	100	0,9
5340121	Pg 21	28,3	50	1,0
5340129	Pg 29	37,0	50	1,3
5340136	Pg 36	47,0	25	2,2
5340142	Pg 42	54,0	25	3,1
5340148	Pg 48	59,6	25	3,6

Metal hangers are used for making on-wall electrical installations (securing conduit). They are made of sheet metal and protected from corrosion by galvanization.

Code number	For FIN conduit	Outside diameter mm	Package pcs	Weight kg/100pcs
5320109	Pg 9	12	1	10
5320110	Pg 11	15,5	1	13
5320130	Pg 13,5	17	1	19
5320160	Pg 16	18,8	1	48
5320210	Pg 21	24	1	71
5320290	Pg 29	32,5	1	121
5320360	Pg 36	41,7	1	165

Code number	For FIN conduit	Outside diameter mm	Package kom	Weight kg/100pcs
5340616	M - 16	12,7	1	11
5340620	M - 20	16,5	1	18
5340625	M - 25	21,2	1	65
5340632	M - 32	28,1	1	104
5340640	M - 40	35,6	1	182



Insert the spring into the conduit and then bend to the desired angle.

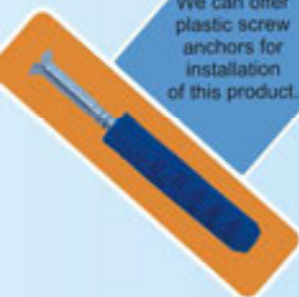
SQUARE JUNCTION BOX

Code number	Dimensions mm	Package pcs	Weight kg/100pcs
5110040	110x110x70	100	18.2
5129090	90x90x55	100	11.8

Used as on-wall junction boxes for all types of wire installations. Square junction boxes are made of self-extinguishable PVC with soft openings for cables, which can be waterproofed with plastic couplings. In combination with cover gasket, the junction box secures the IP 65 level of protection.



We can offer plastic screw anchors for installation of this product.





This is a very practical junction box, since the branching of installation is done with clamps, which greatly speeds up the work and increase reliability.

Dimensions: 80 x 80 mm

Package: 100 pcs

Weight: 7 kg/100pcs

Code number: 5138080

ON-WALL JUNCTION BOX



Made of self-extinguishing PVC. The hard rubber entries can be easily cut for every dimension of cable from 10 - 20 mm. In place of these rubber plugs, FEMAN cable couplings can be used.

Dimensions: $\varnothing 70 \times 40$ mm

Package: 100 pcs

Weight: 6, 2 kg/100pcs

Code number: 5127040

COUPLINGS



Code number PVC	Code number Polyamide	Type	Thread PG(Re)	For cabel diameter mm	Package pcs	Weight kg/100pcs
5300091	5300071	FU PG-13.5	13.5	8-12	100	1,1/1,5
5300092	5300072	FU PG-16	16	10-14	100	1,5/1,8
5300093	5300073	FU PG-21	21	13-18	100	2,6/2,8
5300094	5300074	FU PG-29	29	18-25	100	3,6/4,3
5300095	5300075	FU PG-36	36	22-32	100	7,2/8,5

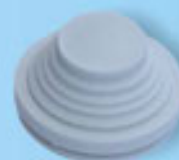
These couplings are made of PVC or polyamide. Polyamide couplings with glass fibers are used where high tension strength is needed. Conform to DIN 46320 standards. Couplings are self-extinguishable and resistant to UV-rays and weather conditions. Currently, these are the only couplings being used as they offer complete protection from contact with voltage.



RUBBER COUPLINGS

FEMAN

Made of hard rubber, intended for use with cables of diameter from $\varnothing 10$ to $\varnothing 20$ mm. They can be easily cut for a certain dimension of the cable. Instead of rubber couplings, standard FEMAN couplings could be used.



Dimensions: $\varnothing 10$ - $\varnothing 20$ mm

Package: 100 pcs

Code number: 5127042

IN-WALL JUNCTION BOX - ROUND, WITHOUT COVER

FEMAN

Used for in-wall installations of connections and switches.

Dimensions: $\varnothing 60 \times 40$ mm

Package: 100 pcs

Weight: 1,4 kg/100pcs

Code number: 5116048



IN-WALL JUNCTION BOX FOR PLASTER - ROUND, WITHOUT COVER

FEMAN

Used for installation of connections and switches plaster.

Dimensions: $\varnothing 70 \times 45$ mm

Package: 50 pcs

Weight: 2,2 kg/100pcs



IN-WALL MODULAR BOX

FEMAN

These boxes can be placed in a series. They have two openings and can be used for all types of in-wall connectors and switches.

Dimensions: $\varnothing 60 \times 60$ mm

Package: 100 pcs

Weight: 2 kg/100pcs



IN-WALL JUNCTION BOX – SQUARE

FEMAN

Square in-wall junction boxes are made of self-extinguishing PVC and have eight "soft openings" for cables on the sides and three on the bottom. The cover is easily attached with two screws even when the box is full and installed deep inside the wall.

Dimensions: $100 \times 100 \times 40$ mm

Package: 100 pcs

Weight: 18,2 kg/100pcs





These boxes are used in installations as junction boxes for connectors.

Dimensions: \varnothing 80x40 mm

Package: 100 pcs

Weight: 1,2 kg/100pcs

Code number: 5116040

IN-WALL JUNCTION BOX FOR PLASTER – ROUND



These boxes are used in installations as junction boxes for connectors.

Dimensions: 80x45 mm

Package: 100 pcs

Weight: 18,2 kg/100pcs

POLYETHYLENE TUBING FOR ELECTRICAL INSTALLATION IN CONCRETE



Code number	Type	Outside diameter mm	Package m	Weight kg/m
5330016	PE CEVI M-16	16	50	0,08
5330020	PE CEVI M-20	20	50	0,11
5330025	PE CEVI M-25	25	50	0,15
5330032	PE CEVI M-32	32	25	0,23
5330040	PE CEVI M-40	40	25	0,36

This tubing is laid in concrete structures as well as for lying of EL and TT installations in building slabs before pouring concrete. They are made of self-extinguishing polyethylene in accordance with European standards. It can be easily bent to all angles and all types of wires/cables can be run through it. Every type of conductor-cable can be easily pushed through them. They are highly resistant to all pressures, also to the spilling of the concrete and all other possible damages. They have shown in practice to be highly reliable and efficient.

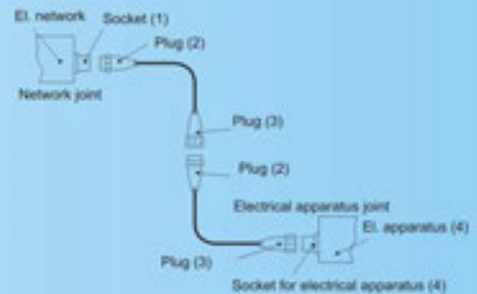




Connection fittings are installation materials which are used for connection mobile and transportable users of electrical energy. Construction of the connection fittings allow for the connecting and disconnecting of permanently laid and mobile lines, as well as the switching on and off electricity, without the help of any tools or assistance.

Connections are designated by:

- Electricity, by amperes (A)
- Intensity, by voltage (V)
- Designation for type of electricity (direct and altering current)
- Frequency, by (HZ)
- Designated type
- Manufacturers label
- Level of mechanical protection IP44 and IP67
- Position of protected contact designated



All electrical parts under voltage are totally protected and accessible if the fittings are mounted and used correctly. It is impossible to make a joint between the contact of the plug and the contact of the socket whilst any of the plug contacts are accessible. When unplugging the plug out of the socket the sequence is reversed.

Shown on the picture is the use of the connection fitting:

a) Network joints allow for connection of a flexible cable with permanently layed lines.

It consists of two parts:

- Socket (1) the part meant for connecting with the permanently layed line.
- Plug (2) represents the part which is used for connecting up to a flexible cable which is connected to a power consumer.

b) Line joint – enables joining of two flexible cables.

It consists of two parts:

- Plug (3) the part used for connecting onto a flexible cable which is connected to the electric network
- Plug (2)

c) Electrical apparatus joint.

- enables connecting of flexible cable with an electrical apparatus.

It consists of two parts:

- Plug (3)
- Socket for electrical apparatus (4), which represents the part used for mounting onto the electrical apparatus.

Standards:

International committee CEE has issued a publication as a suggestion for production of jointing fittings for industrial use. International electrical committee has introduced publication 17 worldwide by issuing publication 309 and 309a. According to the publication JUS N.E3 605 has been created and is valid for connection fittings for industrial use.

PLUGS

Femas



Code number	Type	No of poles	Power (A)	Voltage (V)	Frequency Hz	Package pcs	Weight kg/pcs
5400003	FIV 1632	P+N+W	16	230	50-60	50	0,12
5400005	FIV 1643	3P+W	16	400	50-60	50	0,14
5400010	FIV 1653	3P+N+W	16	400/230	50-60	50	0,16
5400015	FIV 3243	3P+W	32	400	50-60	50	0,21
5400020	FIV 3253	3P+N+W	32	400/230	50-60	50	0,23

PLUGS 63 A

Femas



Code number	Type	No of poles	Power (A)	Voltage (V)	Frequency Hz	Package pcs	Weight kg/pcs
5400025	FIV 6343	3P+W	63	400	50-60	15	0,51

PLUG FOR ELECTRICAL APPARATUS

Femas



Code number	Type	No of poles	Power (A)	Voltage (V)	Frequency Hz	Package pcs	Weight kg/pcs
5400030	FIP 1643	3P+W	16	400	50-60	50	0,17

CONNECTOR

Femas



Code number	Type	No of poles	Power (A)	Voltage (V)	Frequency Hz	Package pcs	Weight kg/pcs
5400048	FIZS 1632	P+N+W	16	230	50-60	50	0,15
5400050	FIZS 1643	3P+W	16	400	50-60	50	0,18
5400055	FIZS 1653	3P+N+W	16	400/230	50-60	50	0,21
5400060	FIZS 3243	3P+W	32	400	50-60	40	0,30
5400065	FIZS 3253	3P+N+W	32	400/230	50-60	40	0,32

SOCKET

Femas



Code number	Type	No of poles	Power (A)	Voltage (V)	Frequency Hz	Package pcs	Weight kg/pcs
5400070	FIS 1643	3P+W	16	400	50-60	50	0,16
5400075	FIS 1653	3P+N+W	16	400/230	50-60	50	0,19
5400080	FIS 3243	3P+W	32	400	50-60	40	0,24
5400085	FIS 3253	3P+N+W	32	400/230	50-60	40	0,29

CONNECTOR

Femas



Code number	Type	No of poles	Power (A)	Voltage (V)	Frequency Hz	Package pcs	Weight kg/pcs
5400090	FIZ 6343	3P+W	63	400	50-60	15	0,84

HANDLE FOR KNIFE-BLADE FUSES

Femán

Code number	Type	In A	Package pcs	Weight kg/pcs
5410001	NV-00-3	2-630	10	0,27
5410002	ZAŠTIČENA	2-630	10	0,50



Used for placing and removing knife-blade fuses NV-00 to NV-03. The handle is made of insulated thermoplastic and can be used without protective gloves.

SINGLE-POLE KNIFE-BLADE FUSE BASE

Femán

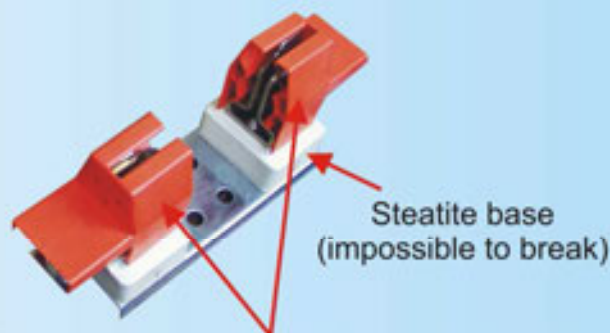
Code number	Type	In A	Package pcs	Weight kg/pcs
5410101	FPK 160/1	160	3	0,18
5410251	FPK 250/1	250	3	0,59
5410401	FPK 400/1	400	3	1,03

Used for protection of electrical networks from short circuiting and overloads.

Note: Protective elements are delivered separately and are used as additional protection for accidental contact with parts under voltage.



One-part contact reliably transfers nominal electricity.



Steatite base
(impossible to break)

Protective covers made of special polyamide, resistant to high temperatures and can serve as a reliable protection from accidental contact with parts under voltage.



THREE-POLE KNIFE-BLADE FUSE BASE

Femán

Code number	Type	In A	Package pcs	Weight kg/pcs
5410103	FPK 160/3	160	1	0,56
5410253	FPK 250/3	250	1	1,76
5410403	FPK 400/3	400	1	3,07



Used for protection of electrical networks from short circuiting and overloads.

Note: Protective elements are delivered separately and are used as additional protection for accidental contact with parts under voltage.

FUSE BASE CONTACTS PROTECTION

Femán

Code number	Designation	Package pcs	Weight kg/pcs
5410252	CONTACTS PROTECTION FOR PK-250	50	1,60
5410402	CONTACTS PROTECTION FOR PK-400	50	2,30

Used as an additional protection from accidental contact with parts under voltage. Insulation class C-VDE 0110. Made according to standards and regulations EN 60269, IEC 269, DIN VDE 0636, DIN 43620, DIN 3623.





Code number	Type	Rated current A	Rated voltage V	Insulation voltage V	Package pc
5400041	L00 - 160/3	160	690	750	1
5400042	FR1 - 250/3	250	690	1000	1
5400043	FR2 - 400/3	400	690	1000	1
5400044	FR3 - 630/3	630	690	1000	1

Used for protection of electrical grid from short-circuiting and overloading. Intended for installation on collectors. Easily installed, take up little free space on the installation board. Housing is made of self-extinguishable polyester reinforced with fiberglass.

FUSE SWITCH-DISCONNECTORS – VERTICAL DESIGN



Code number	Type	Rated current A	Rated voltage V	Insulation voltage V	Package pc
5400031	SL00 - 160/3	160	690	750	1
5400032	FD1 - 250/3	250	690	1000	1
5400033	FD2 - 400/3	400	690	1000	1
5400034	FD3 - 630/3	630	690	1000	1

Used for protection of electrical grid from short-circuiting and overloading. Intended for installation on collectors. Easily installed, take up little free space on the installation board and they guarantee protection from accidental contact. Housing is made of self-extinguishable polyester reinforced with fiberglass.

FUSE SWITCH DISCONNECTORS



Code number	Type	Rated current A	Rated voltage V	Insulation voltage V	Package pc
5400115	FH00 - 160/1	160	690	1000	1
5400116	FH00 - 160/3	160	690	1000	1
5400124	FH1 - 250/1	250	690	1000	1
5400125	FH1 - 250/3	250	690	1000	1
5400139	FH2 - 400/1	400	690	1000	1
5400140	FH2 - 400/3	400	690	1000	1
5400162	FH3 - 630/1	630	690	1000	1
5400163	FH3 - 630/3	630	690	1000	1

Used for protection of electrical grid from short-circuiting and overloading. Intended for installation on collectors. Easily installed, take up little free space on the installation board. Housing is made of self-extinguishable polyester reinforced with fiberglass.

ARMORED FUSES



Code number	Type	Length mm	Width mm	Package pcs	Weight kg/pc
5100020	63 A	226	150	10	1,40
5100026	25 A	226	150	10	1,20

Armored fuses are used to secure residential connections for installation inside attics or in fuse boxes. The housing is made of thermoplastic. At customers demand, they can be delivered with 25 and 63A fuses (indicate when ordering).

Code number	For fuse	Length mm	Package pcs	Weight kg/100pcs
5100125	25 A	200	10	14,24
5100163	63 A	200	10	18,40
5100170	Automatic	216	10	13,60

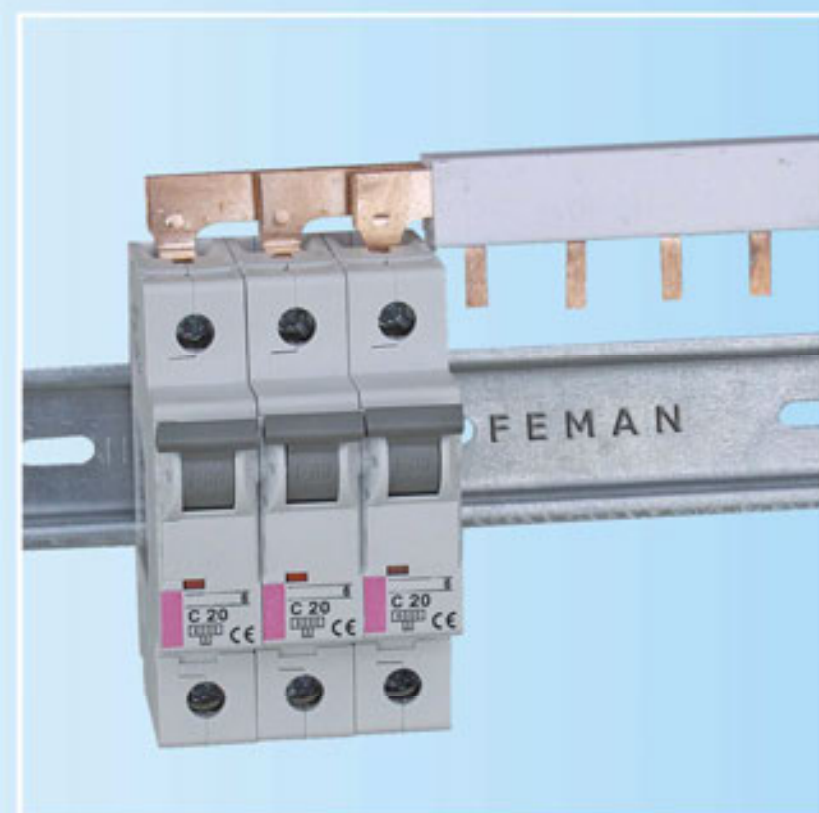
"Snap rail" is set into control panel for the installation of automatic or porcelain fuses of up to 63 A.

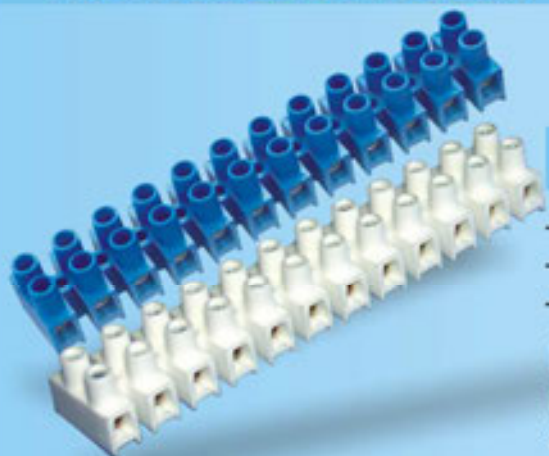


COPPER FUSE COLLECTORS

Used for interconnecting fuses to achieve equally loaded phases. Each phase rail is insulated with self-extinguishing plastic.

Code number	For fuse	Length mm	Package pcs	Weight kg/100pcs
5100111	H TIP 1P	1000	25	24,10
5100112	H TIP 2P	1000	20	46,20
5100113	H TIP 3P	1000	15	68,40
5100114	H TIP 4P	1000	10	90,80
5100121	U TIP 1P	1000	25	28,10
5100122	U TIP 2P	1000	20	54,20
5100123	U TIP 3P	1000	15	80,40
5100124	U TIP 4P	1000	10	106,80





Code number	Designation mm	Allowable voltage V	Allowable amps A	Package pcs	Weight kg/100pcs
5100001	1.5-2.5	400	10	200	4,90
5100004	4	400	25	100	3,60
5100006	6	400	32	80	2,00

Made from insulating thermoplastic, resistant to temperatures up to 80°C. The clamping parts are nickel plated brass. Made as a 12-pole clamp in three dimensions.

NAIL-ON SUPPORTS



Code number	For cable Ø mm	Package pcs	Weight kg/100pcs
1700006	6	100	0,10
1700008	8	100	0,15
1700010	10	100	0,20

Nail-on support rings are intended for quick wall mounting of cables, by directly nailing to wooden, plaster and brick walls. The nails are made of high strength steel and their length appropriate for the supports.

SPACED CABLE SUPPORTS



Code number	For cable Ø mm	Package pcs	Weight kg/100pcs
1700018	11-18	100	0,35
1700024	16-24	100	0,40

Spaced cable supports are made of polystyrol. Their construction permits joining them, one to another, in a series. The appropriate cable is gripped by pressing the cap onto the base.

PLASTIC SCREW ANCHORS



Code number w screw / wo screw	Designation	Length mm	For screws ø mm	Package pcs	Weight kg/100pcs
1715007 1715006	FPT-6	30	3,5 - 5	100	0,2
1715009 1715008	FPT-8	40	4,5 - 6	100	0,4
1715011 1715010	FPT-10	50	6 - 8	100	1,2
1715013 1715012	FPT-12	60	8 - 10	100	1,8



Code number	Designation	Length mm	Width mm	Min. breaking force/kg	Package pc	Weight kg/500pcs
1710102	FKV 100/2,5	100	2,5	12	500x10	0,15
1710155	FKV 150/4,8	150	4,8	26	500x10	0,65
1710205	FKV 200/4,8	200	4,8	26	500x10	0,70
1710255	FKV 250/4,8	250	4,8	26	500x8	0,80
1710305	FKV 300/4,8	300	4,8	26	500x8	1,00

Code number	Type	L mm	A mm	Package pc	Weight kg/100pcs
1710189	FKV 180/9	180	9	100	0,32
1710269	FKV 260/9	260	9	100	0,45

Code number	Type	L mm	A mm	Package pc	Weight kg/100pcs
1710213	FKV 200/13	200	13	100	0,60
1710223	FKV 250/13	250	13	100	0,67



Used to tie cables and wires into bundles, as well as for all ties that need to be done quickly and securely. The ties are made of polyamide which gives them strength and resistance to temperatures up to +85°C. They are made in black and white. The black ties can also be used outside since they are exceptionally resistant to UV-rays and other atmospheric conditions. Ties are produced in lengths up to 300 mm. We particularly recommend FKV 200/13 ties for use with ABC cables. The ties are constructed for quick and easy use, and we recommend using "FEMAN" TIE-GUN for automatic tying and cutting of cable ties.





Code number	Type	Color	A mm	B mm	C mm	L mm
5090042	TK	yellow	50	50	2,2	3000
5090055	TK	yellow	50	50	2,2	4000
5090052	TK	yellow	50	50	2,2	6000
5090063	TK	yellow	75	70	2,3	3000
5090074	TK	yellow	75	70	2,3	4000
5090080	TK	yellow	75	70	2,3	6000
5090030	TK	yellow	110	91	3,2	3000
5090120	TK	yellow	110	91	3,2	4000
5090121	TK	yellow	110	91	2,9	4000
5090122	TK	yellow	110	91	2,6	4000
5090115	TK	yellow	110	91	3,2	6000
5090117	TK	yellow	110	91	2,9	6000
5090118	TK	yellow	110	91	2,6	6000
5090043	EN	orange	50	50	2,2	3000
5090050	EN	orange	50	50	2,2	4000
5090053	EN	orange	50	50	2,2	6000
5090064	EN	orange	75	70	2,3	3000
5090075	EN	orange	75	70	2,3	4000
5090082	EN	orange	75	70	2,3	6000
5090040	EN	orange	110	91	3,2	3000
5090045	EN	orange	110	91	3,2	4000
5090046	EN	orange	110	91	2,9	4000
5090113	EN	orange	110	91	2,6	4000
5090110	EN	orange	110	91	3,2	6000
5090111	EN	orange	110	91	2,9	6000
5090112	EN	orange	110	91	2,6	6000

PVC conduits are used for protection and distribution of electrical (orange) and cables for telecommunication (yellow). Made of special plastic, resistant to mechanical impacts, ageing and corrosion in copper, sour and aggressive environments. They have smooth walls so the cable laying is very simple and quick. Large number of conduits can be positioned in the same trench, in addition to one another and one above another. Standardly produced from 2.2mm to 3.2mm wall thickness, and when requested by the customer, we can produce conduits with smaller wall thickness.

SEALING RUBBER FOR PVC CONDUITS



Code number	Type	ø conduit mm	A mm	B mm	C mm
5090118	50	50	-	-	-
5090117	75	75	-	-	-
5090116	110	110	106	121,6	8,7

Installed in the muff of the conduit and also used to connect two conduits. The rubber is designed to create pressure on the muff and on conduit which prevents moisture to penetrate into the conduit. Made of high quality material resistant to UV-rays, ageing, weather conditions and large number of acids.

PVC CONDUITS BEARER



Code number	Type no. of conduit	Color	A mm	B mm	C mm	D mm
5090015	2	yellow	139,5	137,5	182	159,5
5090016	2	orange	139,5	137,5	182	159,5
5090020	4	yellow	139,5	137,5	182	299
5090021	4	orange	139,5	137,5	182	299
5090025	6	yellow	139,5	137,5	182	458,5
5090026	6	orange	139,5	137,5	182	458,5

Used for parallel connection of two or more PVC conduits. We make models for two, four and six conduits. Strapping multiple bearers can increase the number of connected conduits.

PLUG FOR PVC CONDUIT

FEMAN

Code number	Type	Color	A mm	B mm	C mm
5090156	TK - male	yellow	110	-	58
5090157	TK - female	yellow	-	110,5	58
5090158	EN - male	orange	110	-	58
5090159	EN - female	orange	-	110,5	58

Used to prevent penetration of moisture and unwanted artifacts in the conduit.

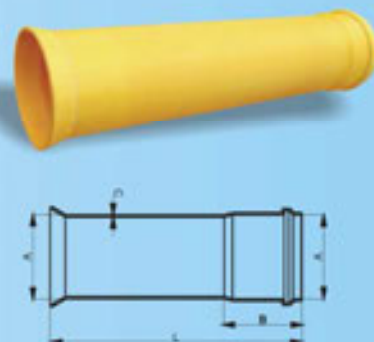


UVODNIK PVC CEVI

FEMAN

Code number	Type	Color	A mm	B mm	C mm	L mm
5090155	TK	yellow	110	91	3,2	600
5090154	EN	orange	110	91	3,2	600

Used as a cable guide in manholes or as a cable guide in installments.

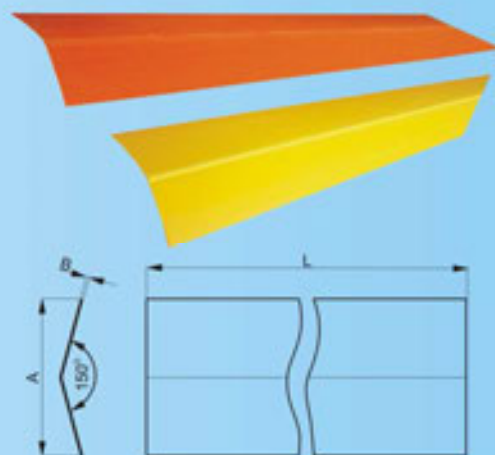


PROTECTORS FOR CABLES

FEMAN

Code number	Type	Color	A mm	B mm	L mm
5090010	TK	yellow	100 (140)	1-2,5	1000
5090000	EN	orange	100 (140)	1-2,5	1000

Used for mechanical cable protection in the ground. Made of hard PVC, type 100, according to JUS G.C6.501. The use of these protectors has increased during the years and they are used for protection of energy and telecommunication cables. In practice, they are used instead of bricks. Advantages are: very simple and quick installation, easy usage and transport, resistance to flowing currents, good electrical insulation, resistance to corrosion, moisture, acid and alkaline soil, mechanical resistance to impact, ageing resistance. Standard length is 1m. At customers demand, we can produce them in all other lengths. Made in yellow and orange colors.



ATTENTION TAPES

FEMAN

Code number	Type	Color	A mm
4703070	TK	yellow	100
4703072	EN	orange	100

Used as a protection for cables in the ground. Standard width of the tape is 120mm, thickness 0.10mm. Standard packages of tapes are 5kg and 10kg. Made in yellow and red colors.

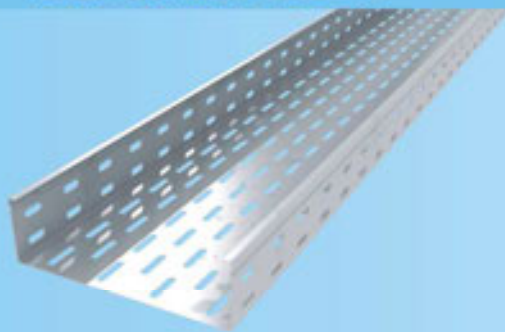
ПАЖЊА! ⚡ ЕНЕРГЕТСКИ КАБЛ

⚡ ПАЖЊА ПТТ КАБЛ ⚡



PERFORATED DUCTS

Femán



Code number	Type	Height mm	Width mm	Length mm	Weight kg/pcs	Thickness mm
5000301	FRK 100	60	100	2000	2,30	0,70
5000302	FRK 200	60	200	2000	3,70	0,80
5000303	FRK 300	60	300	2000	6,50	1,00
5000304	FRK 400	60	400	2000	7,10	1,00

Used to distribute and lay cables in environments where it is necessary to protect cables from mechanical and weather conditions. Made of high quality zinc sheet. Openings on the duct enable good cable cooling and they are also used to connect perforated ducts supports and joints. When more of these elements are connected, "duct way" is formed.

Note: At customers demand, we can make extra protection by plastification.

COVERS FOR PERFORATED METAL DUCTS

Femán

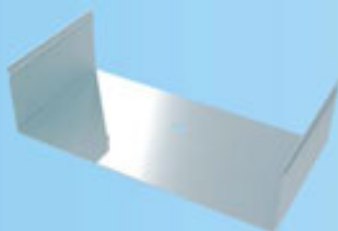


Code number	Type	Height mm	Width mm	Length mm	Weight kg/pcs	Thickness mm
5000311	FRK 100 - P	16	102	2000	1,20	0,50
5000312	FRK 200 - P	16	202	2000	1,60	0,50
5000313	FRK 300 - P	16	302	2000	3,60	0,70
5000314	FRK 400 - P	16	402	2000	4,80	0,70

Used to cover perforated ducts which assures complete protection from mechanical and weather conditions.

PERFORATED DUCT JOINT

Femán



Code number	Type	Height mm	Width mm	Length mm	Weight kg/pcs	Thickness mm
5000291	FRK 100 - S	58	100	95	0,11	0,70
5000292	FRK 200 - S	58	200	100	0,25	0,70
5000293	FRK 300 - S	58	300	140	0,30	0,80
5000294	FRK 400 - S	58	400	200	0,77	0,80

Used to connect perforated ducts. Made of high quality zinc sheet.

SUPPORT FOR PERFORATED METAL DUCTS

Femán



Code number	Type	Height mm	Width mm	Length mm	Weight kg/pcs	Thickness mm
5000321	FRK 100 - N	25	100	75	0,07	0,8
5000322	FRK 200 - N	25	200	100	0,14	1
5000323	FRK 300 - N	25	300	150	0,27	1
5000324	FRK 400 - N	25	400	200	0,48	1

Used to attach perforated ducts on vertical surfaces. Made of high quality zinc sheet.

ANGLED JOINT FOR PERFORATED DUCTS

Femán



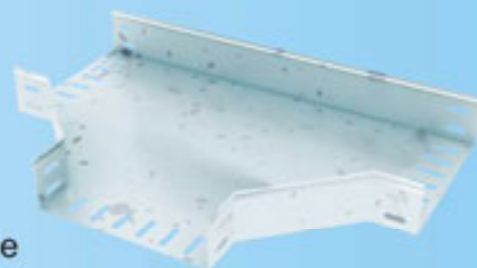
Code number	Type	Height mm	Width mm	Length mm	Weight kg/pcs	Thickness mm
5100301	FRK 100 - US			100	60	0,8
5100302	FRK 200 - US			200	60	0,8
5100303	FRK 300 - US			300	60	1
5100304	FRK 400 - US			400	60	1

Used as an add-in for perforated ducts when the path of the cable needs to be changed in one direction. Made of high quality zinc sheet.

T JOINT FOR PERFORATED DUCTS

FERN

Code number	Type	Connect. width mm	Height mm	Thickness mm
5100311	FRK 100 - TS	100	60	0,8
5100312	FRK 200 - TS	200	60	0,8
5100313	FRK 300 - TS	300	60	1
5100314	FRK 400 - TS	400	60	1

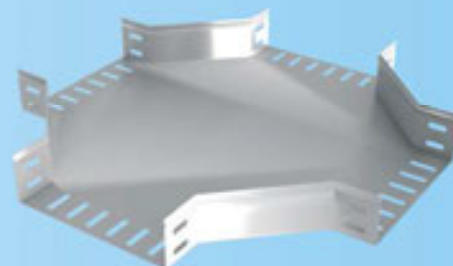


Used as an add-in for perforated ducts when the path of the cable needs to be changed in one direction. Made of high quality zinc sheet.

CROSS JOINT FOR PERFORATED DUCTS

FERN

Code number	Type	Connect. width mm	Height mm	Thickness mm
5100321	FRK 100 - KS	100	60	0,8
5100322	FRK 200 - KS	200	60	0,8
5100323	FRK 300 - KS	300	60	1
5100324	FRK 400 - KS	400	60	1

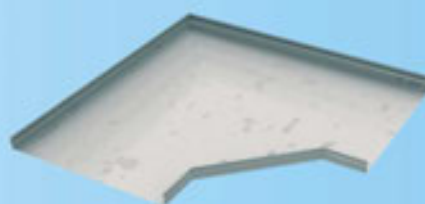


Used as an add-in for perforated ducts when the path of the cable needs to be changed in multiple directions. Made of high

COVER FOR ANGLED JOINT FOR PERFORATED DUCTS

FERN

Code number	Type	Connect. width mm	Height mm	Thickness mm
5100331	FRK 100 - PUS	100	16	0,8
5100332	FRK 200 - PUS	200	16	0,8
5100333	FRK 300 - PUS	300	16	1
5100334	FRK 400 - PUS	400	16	1



Used to cover angled joints for perforated ducts. This cover enables continuous protection from mechanical and weather conditions in perforated ducts. Made of high quality zinc sheet.

COVER FOR T JOINT FOR PERFORATED DUCTS

FERN

Code number	Type	Connect. width mm	Height mm	Thickness mm
5100341	FRK 100 - PTS	100	16	0,8
5100342	FRK 200 - PTS	200	16	0,8
5100343	FRK 300 - PTS	300	16	1
5100344	FRK 400 - PTS	400	16	1



Used to cover T joints for perforated ducts. This cover enables continuous protection from mechanical and weather conditions in perforated ducts. Made of high quality zinc sheet.

COVER FOR CROSS JOINT FOR PERFORATED DUCTS

FERN

Code number	Type	Connect. width mm	Height mm	Thickness mm
5100351	FRK 100 - PKS	100	16	0,8
5100352	FRK 200 - PKS	200	16	0,8
5100353	FRK 300 - PKS	300	16	1
5100354	FRK 400 - PKS	400	16	1



Used to cover cross joints for perforated ducts. This cover enables continuous protection from mechanical and weather conditions in perforated ducts. Made of high quality zinc sheet.

SUPPORT SCREW WITH HOOK FOR LOWERED CEILINGS

FEMAN



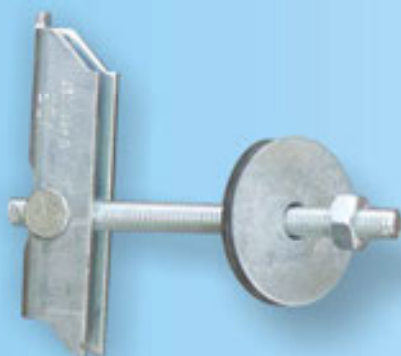
Necessary when installing lowered ceiling constructions, with universal plaster boards (Knauf, Austroform...) or similar materials. Made in lengths from 50mm to 70mm with screws M3, M4. Maximal force is 400N. Metal parts are galvanized, and at customers demand we will hot dip galvanize them.

When using FEMAN support screw with hook for lowered ceilings, installation of ceiling constructions will be swift, easy, reliable and high-quality.

Code number: 5340170

SUPPORT SCREW WITH NUT SCREW FOR LOWERED CEILINGS

FEMAN



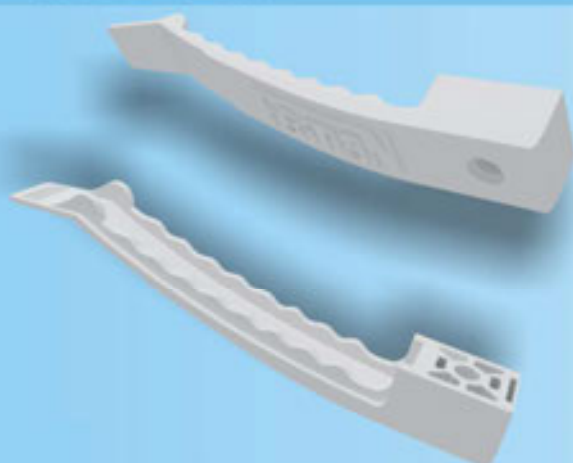
Necessary when installing lowered ceiling constructions, with universal plaster boards (Knauf, Austroform...) or similar materials. Made in lengths from 50mm to 70mm with screws M3, M4. Maximal force is 2000N. Metal parts are galvanized, and at customers demand we will hot dip galvanize them.

When using FEMAN support screw with nut screw for lowered ceilings, installation of ceiling constructions will be swift, easy, reliable and high-quality.

Code number: 5340175

CABLE CLAMP

FEMAN



Used to, easily and swiftly, tighten all types of cables on ceilings or walls. Made of special thermal plastic.

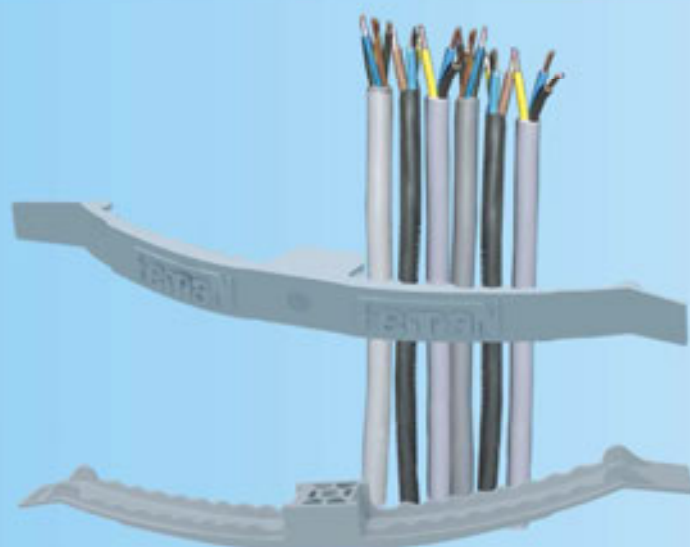
Length: 125mm

Weight: 1,4 kg/100 pcs

Code number: 1700030

DOUBLE CABLE CLAMP

FEMAN



Used to, easily and swiftly, tighten all types of cables on ceilings or walls. Made of special thermal plastic.

Length: 220mm

Weight: 2,4 kg/100 pcs

Code number: 1700035

Code number	Type	d mm	D mm	W mm	Package m
1722010	SZP 6-10	7,5	10	11,4	10
1722025	SZP 10-25	20	25	19,6	10

Used to fasten several wires and cables in electrical boxes and other installments.



**AT CUSTOMERS DEMAND WE CAN MAKE
VARIOUS PRODUCTS**



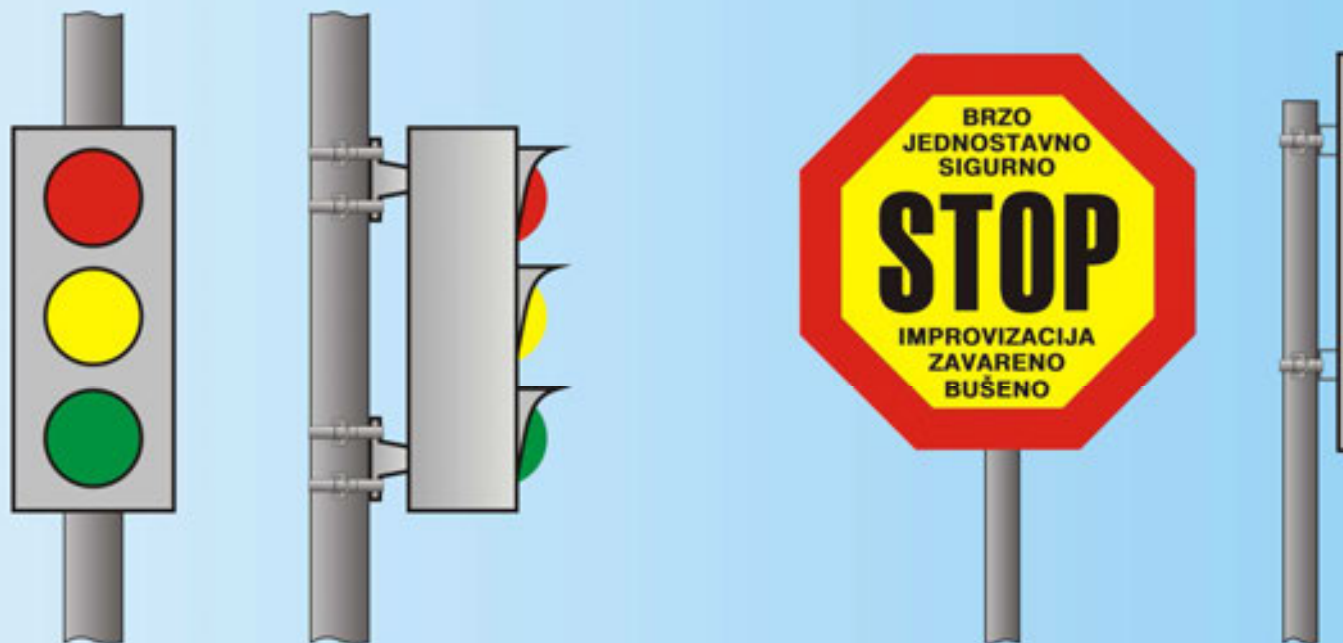
GEAR FOR ATTACHMENT

Examples of connecting various elements to steel and concrete poles with stainless steel bands



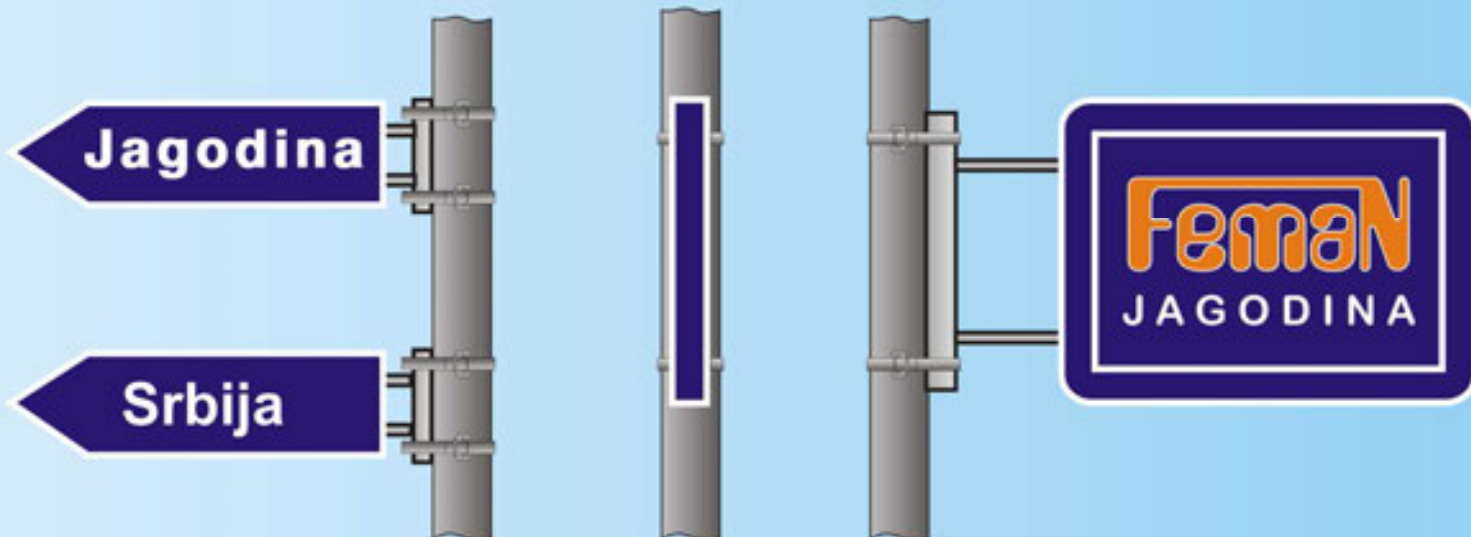
***Quick, simple, safe, permanent,
without welding or drilling with expensive tools***

EXAMPLES OF USING AND ATTACHING WITH STAINLESS STEEL BANDS TO STEEL AND CONCRETE POLES



SECURING TRAFFIC LIGHTS

Securing signs



Securing advertisements - Road signs

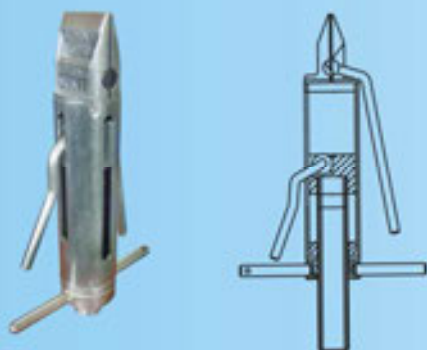


Example of connecting ventilation & air-conditioner pipes and hoses.



Extending plastic and rubber hose & pipe for 60 mb pressure. Exceptionally appropriate for water systems, sewers, air-conditioning systems, the automobile industry.

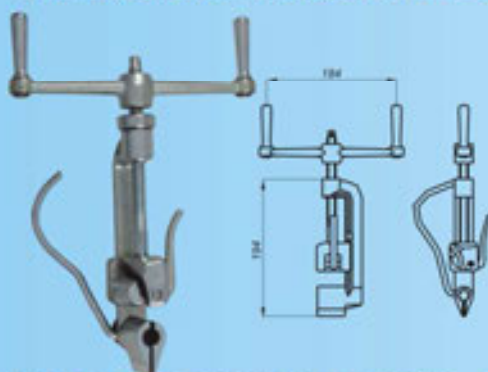
PULLING GRIP FOR STAINLESS STEEL BANDS



Used for tightening and cutting of stainless steel bands (steel support rings) used for securing equipment to poles. This is a very reliable and practical way for quick and easy securing of brackets, stands, supports, lamps, protection devices, signs, etc. on metal, concrete or wooden pole - supports, making a long lasting, greatly tightened, secure attachment without drilling and welding. This system has long been in use by the electrical industry in the developed countries.

Packing: 1 pcs
Weight: 1.78 kg/ pcs
Code number: 4710000

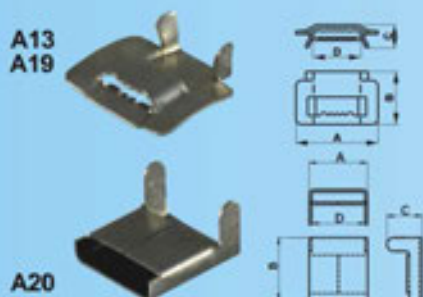
PULLING GRIP FOR STAINLESS STEEL BANDS FZT



Used for tightening and cutting of stainless steel bands (steel support rings) used for securing equipment to poles. This is a very reliable and practical way for quick and easy securing of brackets, stands, supports, lamps, protection devices, signs, etc. on metal, concrete or wooden pole - supports, making a long lasting, greatly tightened, secure attachment without drilling and welding. This system has long been in use by the electrical industry in the developed countries.

Packing: 1 pcs
Weight: 1.8 kg/ pcs
Code number: 4710002

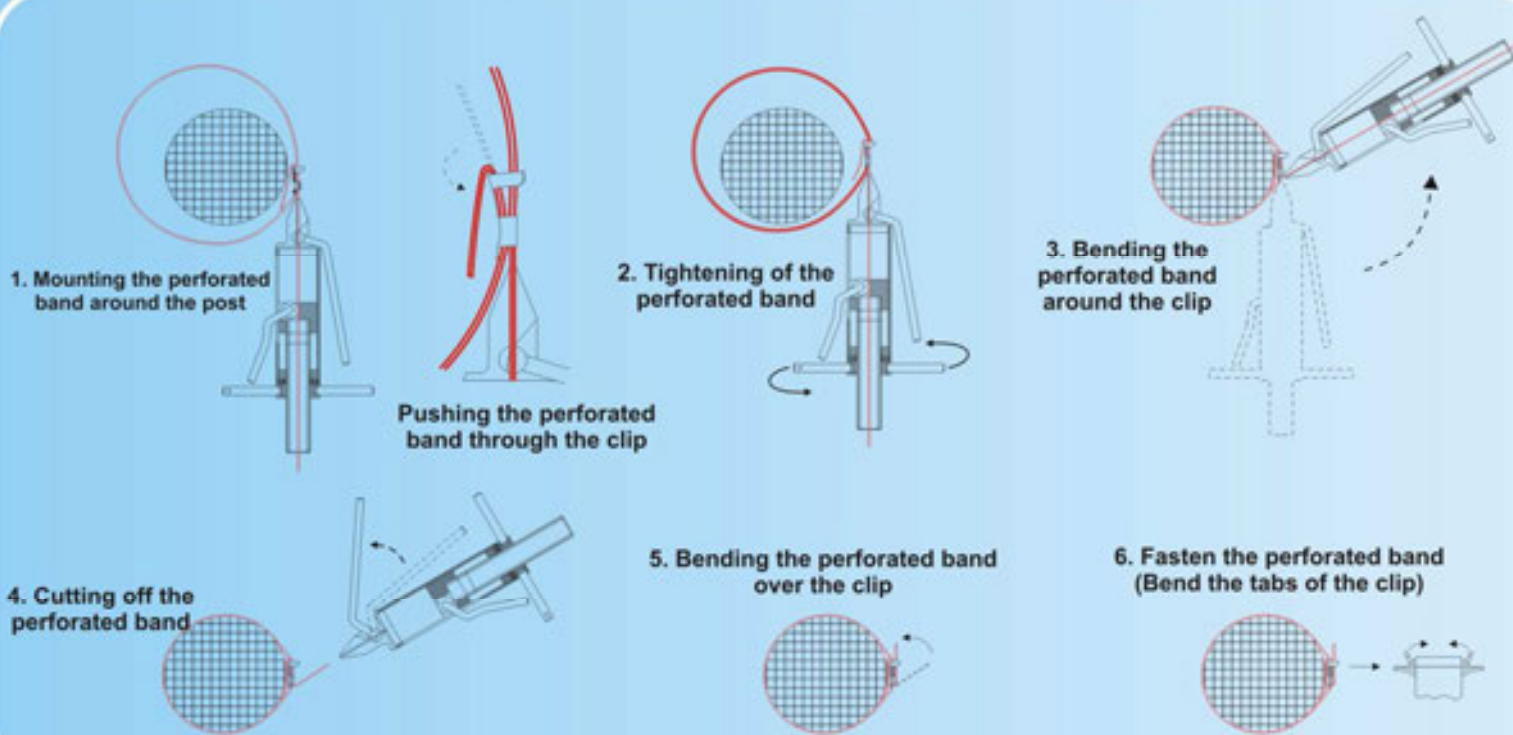
CLIPS FOR STAINLESS STEEL BANDS



Code number	Type	A mm	B mm	C mm	D mm	Package pcs	Weight kg/100 pcs
4710213	A13	32	27	10	16	100	1,0
4710219	A19	42	27	12	25	100	1,2
4710320	A20	23.2	25	14	21.2	150	0.8

Used for attaching stainless steel bands to poles.

PROCEDURE FOR TIGHTENING PERFORATED BANDS



STAINLESS STEEL BAND IN PLASTIC CASE

Code number	A mm	Thickness mm	Material (stainless steel)	Breaking strength (N)	Weight of roll in the case	Package m
4710009	9	0,55	1,4371	4100		20
4710013	13	0,70	1,4371	7100	2,6kg/pc	20
4710019	19	0,70	1,4371	10600	3,7kg/pc	20

Used for attaching equipment to poles. On customer's request we can also provide bands of other dimensions and lengths. The case contains 30 clips adapted to the ordered band.

Code number: 4710000

Code number	A mm	Thickness mm	Material (stainless steel)	Breaking strength (N)	Weight of roll in the case	Package m
4710075	13	0,70	1,4371	7100	3,5kg/pc	50
4710080	19	0,70	1,4371	10600	5,1kg/pc	50

PERFORATED GALVANIZED TAPE WITH ROUND HOLES

Code number	A mm	B mm	C mm	Thickness mm	Breaking strength (N)	Weight of roll in the case	Package m
4710120	20	12	6	1,0	4200	3,1kg/pc	20
4710125	25	12	6	1,0	5400	3,5kg/pc	20

Used for attaching equipment to poles using an appropriate galvanized screw nut and flat washer. At customer's request we also provide bands of other dimensions and lengths. The sharp edges on the band are processed according to DIN. The case also contains 30 pieces of screw nuts adapted to the ordered band.

PERFORATED GALVANIZED ELLIPTICAL BAND

Code number	A mm	B mm	C mm	Thickness mm	Breaking strength (N)	Weight of roll in the case	Package m
4710130	20	24,3	6,2	1,0	4000	2,7kg/pc	20
4710131	20	24,3	8,2	1,0	3400	2,5kg/pc	20

Flexible, light, bendable, universal in use. Used for attaching equipment to poles using an appropriate galvanized screw nut and flat washer. Very convenient for hanging of instillation pipes for water, sewer and heat. On customer's request we also provide bands of other dimensions and lengths. The sharp edges on the band are processed according to DIN. The case also contains 30 pieces of screw nuts adapted to the ordered band.

Code number	A mm	B mm	C mm	Thickness mm	Breaking strength (N)	Weight of roll in the case	Package m
4710135	20	24,3	6,2	1,0	4000	0,70kg/pc	5
4710136	20	24,3	8,2	1,0	3400	0,87kg/pc	5

Convenient for hanging and tightening of all types and pipes dimensions.

